

Guidelines for the Management of Heart Failure Clinical Practice Guideline Endorsement MedStar Health

“These guidelines are provided to assist physicians and other clinicians in making decisions regarding the care of their patients. They are not a substitute for individual judgment brought to each clinical situation by the patient’s primary care provider-in collaboration with the patient. As with all clinical reference resources, they reflect the best understanding of the science of medicine at the time of publication but should be used with the clear understanding that continued research may result in new knowledge and recommendations”.

MedStar Ambulatory Best Practice Committee endorses the 2022 and 2021 American College of Cardiology Expert Consensus Decision Pathway for the Optimization of Heart Failure Treatment.¹ With this latest 2022 update, the American College of Cardiology (ACC) and American Heart Association (AHA) hope to provide clinicians with “actionable knowledge” and to this end, this document contains many Expert Consensus Decision Pathways. These pathways are intended to guide clinicians, not define the one correct answer.

This article serves as an update to the 2021 guidelines with pertinent changes to ambulatory care added from the 2022 guidelines. What follows below is a summary and key figures and tables. Practitioners are encouraged to review the primary document for a better understanding of this summary and endorsement. This document will focus on the ambulatory care management for patients with heart failure.

The 2021 Update reviews how to:

- ❖ Implement guideline directed medical treatment – how to select, initiate and titrate medications.
- ❖ How to address challenges with referrals, care coordination, adherence, specific patient cohorts and medication cost and access.
- ❖ How to manage increasing complexity of care, comorbidities and palliative and hospice care.

Pertinent additions from the 2022 guidelines for ambulatory care include:

- ❖ Guidelines-Directed Medical Therapy for Heart Failure with reduced ejection fraction now lists 4 medication classes including Sodium-glucose cotransporter-2 inhibitors (SGLT2i).
- ❖ SGLT2i have a Class 2a recommendation in HF with mildly reduce ejection fraction. Weaker recommendations (Class of Recommendation 2b) are made for ARNi, ACEi, ARB, MRA and beta blockers in this population.
- ❖ New recommendations for HFpEF are made for SGLT2i (Class of Recommendation 2a) MRAs (Class of Recommendation 2b), and ARNi (Class of Recommendation 2b). Several prior recommendations have been renewed including treatment of hypertension (Class 1 recommendation), treatment of atrial fibrillation (Class of Recommendation 2a),

<u>Initial Approval Date and Reviews:</u> April 2021, April 2023	<u>Most Recent Revision and Approval Date:</u> April 2023 © Copyright MedStar Health, 2012	<u>Next Scheduled Review Date:</u> April 2025
--	--	---

use of ARBs (Class of Recommendation 2b), and avoidance of routine use of nitrates or phosphodiesterase-5 inhibitors (Class of Recommendation 3: No Benefit).

- ❖ Patients with advanced HF who wish to prolong survival should be referred to a team specializing in HF. A heart failure specialty team reviews HF management: assesses suitability for advanced HF therapies and uses palliative care including palliative inotropes where consistent with the patient’s goals of care.
- ❖ Primary prevention is important for those at risk for HF (stage A) or pre-HF (stage B). Stages of Heart Failure Guideline HF were revised to emphasize the new terminologies of “at risk” for HF for stage A and pre-HF for stage B.
- ❖ Recommendations are provided for select patients with HF and iron deficiency, anemia, hypertension, sleep disorders, type 2 diabetes, atrial fibrillation, coronary artery disease, and malignancy.

The 2022 guidelines update the ACC guidelines to emphasize the development and progression of disease:

ACC/AHA Stages of Heart Failure:

Stage A: At high risk for HF

Stage B: Pre-Heart Failure

Stage C: Symptomatic Heart Failure

Stage D: Advanced Heart Failure

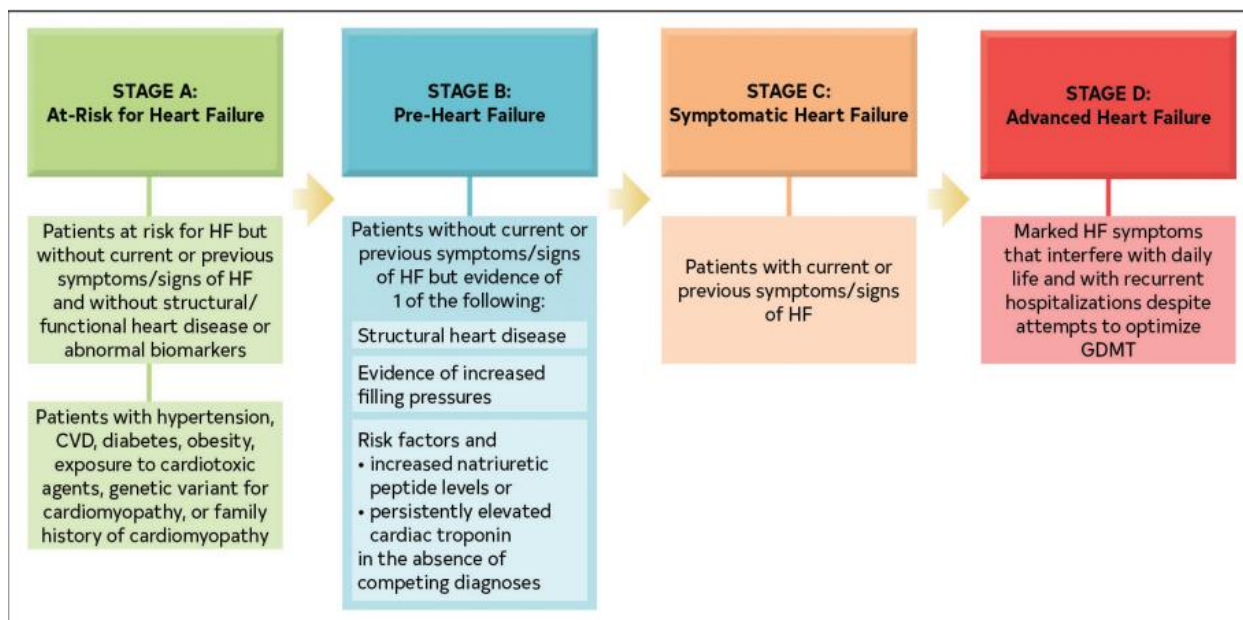


Figure 1: ACC/AHA Stages of Heart Failure. Therapeutic interventions in each stage aim to modify risk factors (stage A), treat risk and structural heart disease to prevent HF (stage B), and reduce symptoms, morbidity, and mortality (stages C and D).

<p><u>Initial Approval Date and Reviews:</u> April 2021, April 23</p>	<p><u>Most Recent Revision and Approval Date:</u> April 2023 © Copyright MedStar Health, 2012</p>	<p><u>Next Scheduled Review Date:</u> April 2025</p>
--	--	---

The NYHA function classification remains unchanged in the 2022 guidelines and is an independent predictor of mortality. However, there is now an emphasis on the continuum of care of a patient with heart failure. Although a patient with stage C heart failure may be asymptomatic with treatment (NYHA class 1), they are still categorized at stage C heart failure.

New York Heart Association (NYHA) functional classification:

Class I: No limitation of physical activity. Ordinary physical activity does not cause symptoms of HF.

Class II: Slight limitation of physical activity. Comfortable at rest, but ordinary physical activity results in symptoms of HF.

Class III: Marked limitation of physical activity. Comfortable at rest, but less than ordinary activity causes symptoms of HF.

Class IV: Unable to perform any physical activity without symptoms of HF, or symptoms of HF at rest.

New Onset/De Novo HF:	Resolution of Symptoms:	Persistent HF:	Worsening HF:		
<ul style="list-style-type: none"> Newly diagnosed HF No previous history of HF 	<ul style="list-style-type: none"> Resolution of symptoms/signs of HF <table border="1" data-bbox="521 993 794 1241"> <tr> <td data-bbox="521 993 654 1241">Stage C with previous symptoms of HF with persistent LV dysfunction</td> <td data-bbox="659 993 794 1241">HF in remission with resolution of previous structural and/or functional heart disease*</td> </tr> </table>	Stage C with previous symptoms of HF with persistent LV dysfunction	HF in remission with resolution of previous structural and/or functional heart disease*	<ul style="list-style-type: none"> Persistent HF with ongoing symptoms/signs and/or limited functional capacity 	<ul style="list-style-type: none"> Worsening symptoms/signs/functional capacity
Stage C with previous symptoms of HF with persistent LV dysfunction	HF in remission with resolution of previous structural and/or functional heart disease*				

Figure 2: Continuum of Stage C Heart Failure

In an accompanying article by the ACC, the following are key perspectives addressed by the 2022 guidelines, verbatim:

- Heart failure (HF) encompasses a broad range of left ventricular (LV) function. New treatment guidelines address the entire spectrum of HF. The classification of HF is as follows: HFrEF (HF with reduced ejection fraction [EF]): LVEF \leq 40%; HFimpEF (HF with improved EF): Previous LVEF \leq 40% and follow-up measurement of LVEF $>$ 40%; HFmrEF (HF with mildly reduced EF): LVEF 41-49%; HFpEF (HF with preserved EF): LVEF \geq 50%. All patients with current or prior HF, irrespective of EF, should be considered for guideline-directed medical therapy (GDMT).

<p><u>Initial Approval Date and Reviews:</u> April 2021, April 23</p>	<p><u>Most Recent Revision and Approval Date: April 2023</u> © Copyright MedStar Health, 2012</p>	<p><u>Next Scheduled Review Date:</u> April 2025</p>
--	--	---

2. GDMT has expanded to include four classes: 1) renin-angiotensin system inhibition (RASi) with angiotensin receptor-neprilysin inhibitors (ARNi), angiotensin-converting enzyme inhibitors (ACEi), or angiotensin (II) receptor blockers (ARB) alone; 2) beta blockers; 3) mineralocorticoid receptor antagonists (MRA); and 4) sodium-glucose cotransporter-2 inhibitors (SGLT2i). ARNi is now recommended as first-line RASi to reduce morbidity and mortality in HFrEF (Class of Recommendation 1a). ACEi is recommended when ARNi is not feasible, and ARB in those who are ACEi intolerant and when ARNi is not feasible. In symptomatic patients with HFrEF who tolerate ACEi or ARB, replacement with ARNi is recommended for further reduction in morbidity and mortality.
3. New recommendations were made for the use of SGLT2i in HF. In symptomatic patients with chronic HFrEF, SGLT2i is recommended to reduce hospitalization and cardiovascular mortality, regardless of the presence of type 2 diabetes (Class of Recommendation 1a). SGLT2i can also be beneficial in patients with HFmrEF and HFpEF (Class of Recommendation 2a).
4. While there is little data to guide management of patients with HFimpEF, a small, randomized trial (TRED-HF) demonstrated a high rate of relapse of dilated cardiomyopathy (44%) within 6 months of discontinuation of GDMT. Therefore, it is recommended that GDMT be continued in patients with HFimpEF, including those who are asymptomatic, to prevent relapse of HF and LV dysfunction.
5. High value therapies (<\$60,000/quality-adjusted life year gained) include ARNi, ACEi, ARB, beta blocker, MRA, hydralazine and isosorbide dinitrate in African Americans, implantable cardioverter-defibrillator (ICD), and cardiac resynchronization therapy (CRT), while SGLT2i and cardiac transplantation are of intermediate value. Tafamadis for amyloid was identified as low value (>\$180,000/quality-adjusted life year gained), while mechanical circulatory support and pulmonary pressure monitoring are of uncertain value.
6. Patients with suspected amyloid should undergo screening for monoclonal light chains, and if negative, bone scintigraphy should be performed to confirm the presence of transthyretin amyloid. Genetic testing is recommended in patients with transthyretin amyloid to differentiate hereditary variant from wild type. Tafamadis is recommended in select patients with wild-type or variant transthyretin amyloid to reduce cardiovascular morbidity and mortality (Class of Recommendation 1a). Anticoagulation is reasonable in patients with cardiac amyloid and atrial fibrillation to reduce the risk of stroke (Class of Recommendation 2a).
7. Signs and symptoms of HF can be nonspecific. Therefore, supporting evidence of increased filling pressures, either invasive (hemodynamics) or noninvasive (diastolic function on imaging, natriuretic peptide) are required for confirmation of diagnosis when the EF is >40%.

<u>Initial Approval Date and Reviews:</u> April 2021, April 23	<u>Most Recent Revision and Approval Date: April 2023</u> © Copyright MedStar Health, 2012	<u>Next Scheduled Review Date:</u> April 2025
--	--	---

8. Timely referral for HF specialty care is recommended for advanced HF patients (if in accordance with goals of care) to review HF management and to assess suitability for advanced HF therapies.
9. HF is a progressive disease, as highlighted by the ACC/AHA Stages of HF A-D. New terminology incorporates the designations “at-risk” and “pre-HF”. Primary prevention of HF, through lifestyle modification, screening, and management of risk factors and comorbid conditions, is recommended for those at risk (Stage A) or pre-HF (Stage B).
10. Management of comorbid conditions in patients with HF may be beneficial. The new guideline provides recommendations for select patients with HF and anemia, iron deficiency, hypertension, sleep disorders, type 2 diabetes, atrial fibrillation, coronary artery disease, and malignancy.

The 2021 document included the following principles, which are either unchanged or not addressed in the 2022 guidelines but remain pertinent to ambulatory primary care. They are reproduced here verbatim:

- ❖ Principle 1: Guideline directed medical therapy (GDMT) is the foundation of HF care, and the GDMT with the highest expected benefit should be prioritized.
- ❖ Principle 2: Target doses are associated with best outcomes.
- ❖ Principle 3: Start GDMT immediately. Delayed initiation of GDMT is associated with never initiating GDMT.
- ❖ Principle 4: Attention to the clinical, social, and financial barriers to achieving GDMT should be prioritized.
- ❖ Principle 5: Diligent management of volume status will reduce patient symptoms.
- ❖ Principle 6: Tolerability and side effects depend, in part, on how and when GDMT is prescribed.
- ❖ Principle 7: Primary prevention implantable cardioverter-defibrillator and cardiac resynchronization therapy should be considered after consistent use of optimal doses of all GDMTs for at least 3 to 6 months, followed by reassessment of EF and other indications for device therapy.
- ❖ Principle 8: Focus on the patient’s symptoms, functional capacity, and cardiac function.
- ❖ Principle 9: The value of a therapy to a patient is the combination of benefits and burdens as they relate to that patient’s values, goals, and preferences.
- ❖ Principle 10: Team-based care is critical to optimizing GDMT and may include frequent follow-up visits, telehealth visits, and remote monitoring.

<u>Initial Approval Date and Reviews:</u> April 2021, April 23	<u>Most Recent Revision and Approval Date: April 2023</u> © Copyright MedStar Health, 2012	<u>Next Scheduled Review Date:</u> April 2025
--	--	---

The following are the Key Tables and Figures from the 2022 and 2021 ACC Update.

Adapted from Table 1: Guideline Directed Medication Therapy (2021) with updates from 2023

Medication*	Starting Dose	Target Dose	Common Adverse Effects	Additional Clinical Information
Beta Blockers				
Bisoprolol (\$68)	1.25mg once daily	10mg once daily	Headache Fatigue	May mask symptoms of hypoglycemia in diabetics
Carvedilol <i>Coreg®</i> (\$257)	3.125mg twice daily	Weight <85kg: 25mg twice daily Weight 85+kg: 50mg twice daily	Dizziness Fatigue Weight gain Erectile dysfunction	Take with food to decrease risk of orthostatic hypotension May mask symptoms of hypoglycemia in diabetics
Metoprolol Succinate <i>Toprol XL®</i> (\$92)	12.5-25mg daily	200mg daily	Dizziness Fatigue Headache Depression	Tartrate form should not be used in heart failure May be split in half but not crushed or chewed Do not discontinue abruptly May mask symptoms of hypoglycemia in diabetics
ARNIs				
Sacubitril/valsartan <i>Entresto®</i> (\$401 – brand only)	24/26mg- 49/51mg daily	97/103mg daily	Hyperkalemia Dizziness	Avoid in pregnant patients
ACEIs				
Captopril (\$261)	6.25mg 3x/day	50mg 3x/day	Hyperkalemia Angioedema	Take at least 1 hour before meals Avoid in pregnant patients
Enalapril <i>Vasotec®</i> (\$166)	2.5mg twice daily	10-20mg twice daily	Hyperkalemia Dizziness Angioedema	If SCr > 1.6, start at 2.5mg daily Avoid in pregnant patients

<u>Initial Approval Date and Reviews:</u> April 2021, April 23	<u>Most Recent Revision and Approval Date:</u> April 2023 © Copyright MedStar Health, 2012	<u>Next Scheduled Review Date:</u> April 2025
--	--	---

Lisinopril <i>Zestril</i> ® (\$47)	2.5-5mg daily	20-40mg daily	Dizziness Headache Hyperkalemia Angioedema	Avoid in pregnant patients
Ramipril <i>Altace</i> ® (\$67)	1.25-2.5mg daily	10mg daily	Dizziness Headache Angioedema	Avoid in pregnant patients
ARBs				
Candesartan <i>Atacand</i> ® (\$129)	4-8mg daily	32mg daily	Dizziness Headache	Avoid in pregnant patients
Losartan <i>Cozaar</i> ® (\$167)	25-50mg daily	150mg daily	Dizziness	Avoid in pregnant patients
Valsartan <i>Diovan</i> ® (\$395)	20-40mg twice daily	160mg twice daily	Dizziness Headache	Avoid in pregnant patients
Aldosterone Antagonists				
Eplerenone <i>Inspra</i> ® (\$130)	25mg daily	50mg daily	Hyperkalemia	
Spiroolactone <i>Aldactone</i> ® (\$26)	12.5-25mg daily	25-50mg daily	Hyperkalemia Gynecomastia	
SGLT2 Inhibitors				
Dapagliflozin <i>Farxiga</i> ® (\$678 – brand only)	10mg daily	10mg daily	Urinary tract infection Diabetic ketoacidosis Hypotension	Must maintain adequate hydration
Empagliflozin <i>Jardiance</i> ® (\$712 – brand only)	10mg daily	10mg daily	Urinary tract infection Diabetic ketoacidosis Hypotension	Must maintain adequate hydration
Vasodilators				
Hydralazine (\$96)	25mg 3x/day	75mg 3x/day	Diarrhea Loss of appetite	
Isosorbide dinitrate <i>Isordil Titradose</i> ® (\$214)	20mg 3x/day	40mg 3x/day	Headache Lightheadedness	PDE 5 inhibitors contraindicated in patients on nitrates
Isosorbide dinitrate/hydralazine	1-tab 3x/day	2-tab 3x/day	See individual agents	

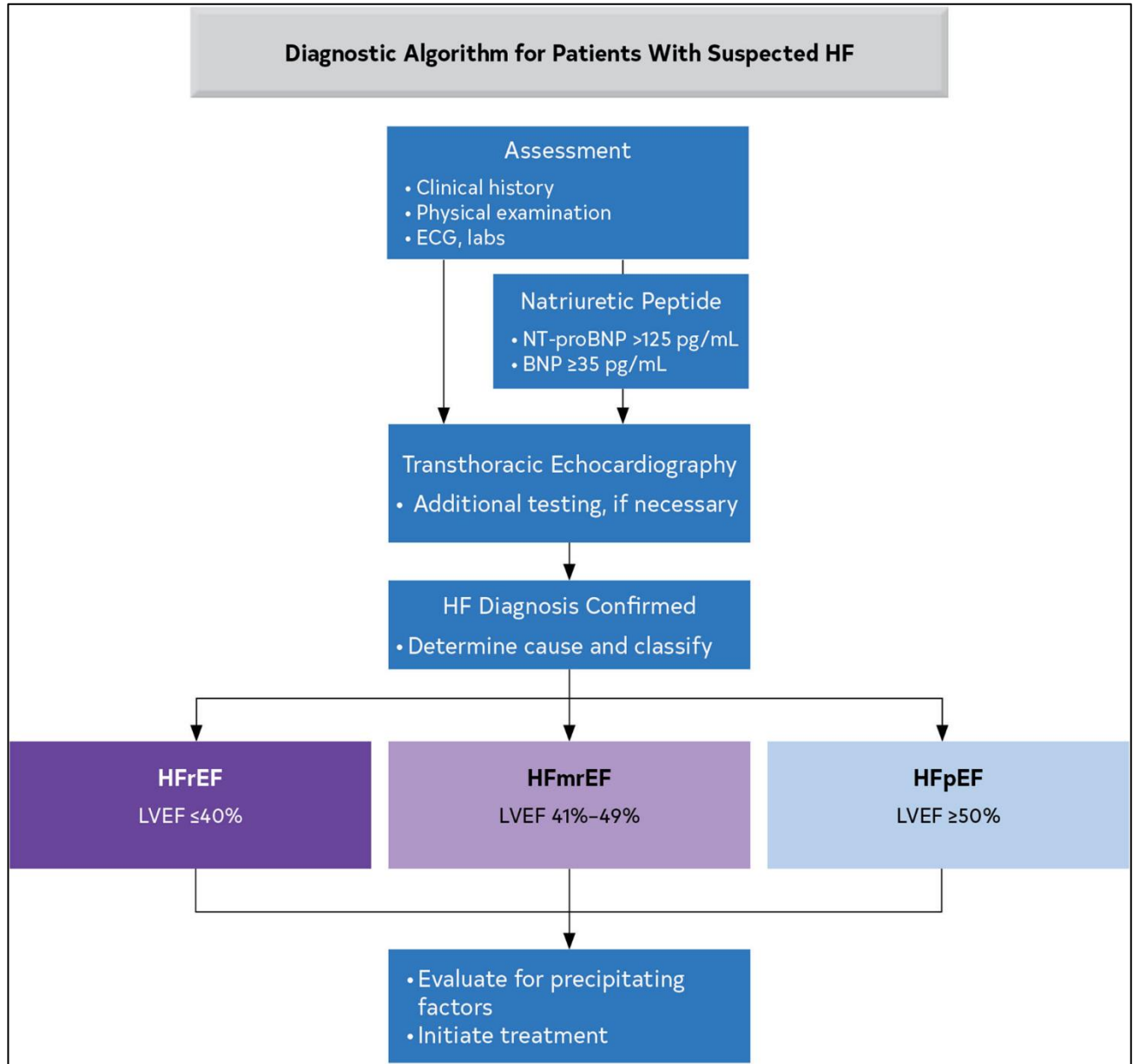
<u>Initial Approval Date and Reviews:</u> April 2021, April 23	<u>Most Recent Revision and Approval Date:</u> April 2023 © Copyright MedStar Health, 2012	<u>Next Scheduled Review Date:</u> April 2025
--	--	---

combination (20/37.5mg) <i>BiDil</i> ® (\$754)				
Other				
Ivabradine <i>Corlanor</i> ® (\$681 – brand only)	2.5-5mg twice daily	Titrated to goal heart rate 50- 60bpm Max dose 7.5mg twice daily	Atrial fibrillation Phosphenes	Take with food Available as oral solution if patient unable to swallow tabs

*AWP for 30 days of medication at maximum target dose unless specified otherwise

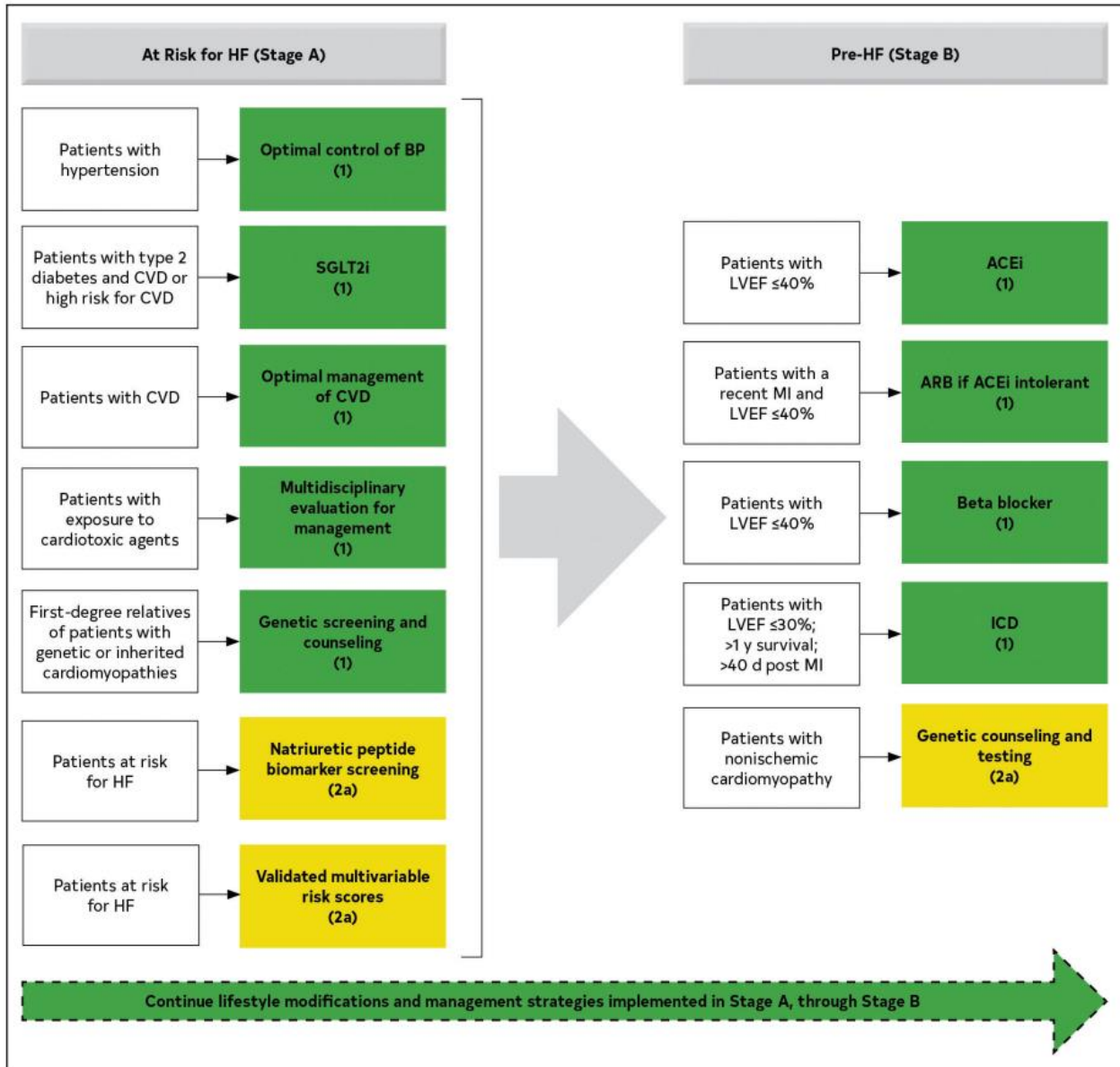
<u>Initial Approval Date and Reviews:</u> April 2021, April 23	<u>Most Recent Revision and Approval Date: April 2023</u> © Copyright MedStar Health, 2012	<u>Next Scheduled Review Date:</u> April 2025
--	--	---

Figure 5: Diagnostic Algorithm for HF and EF-Based Classification.



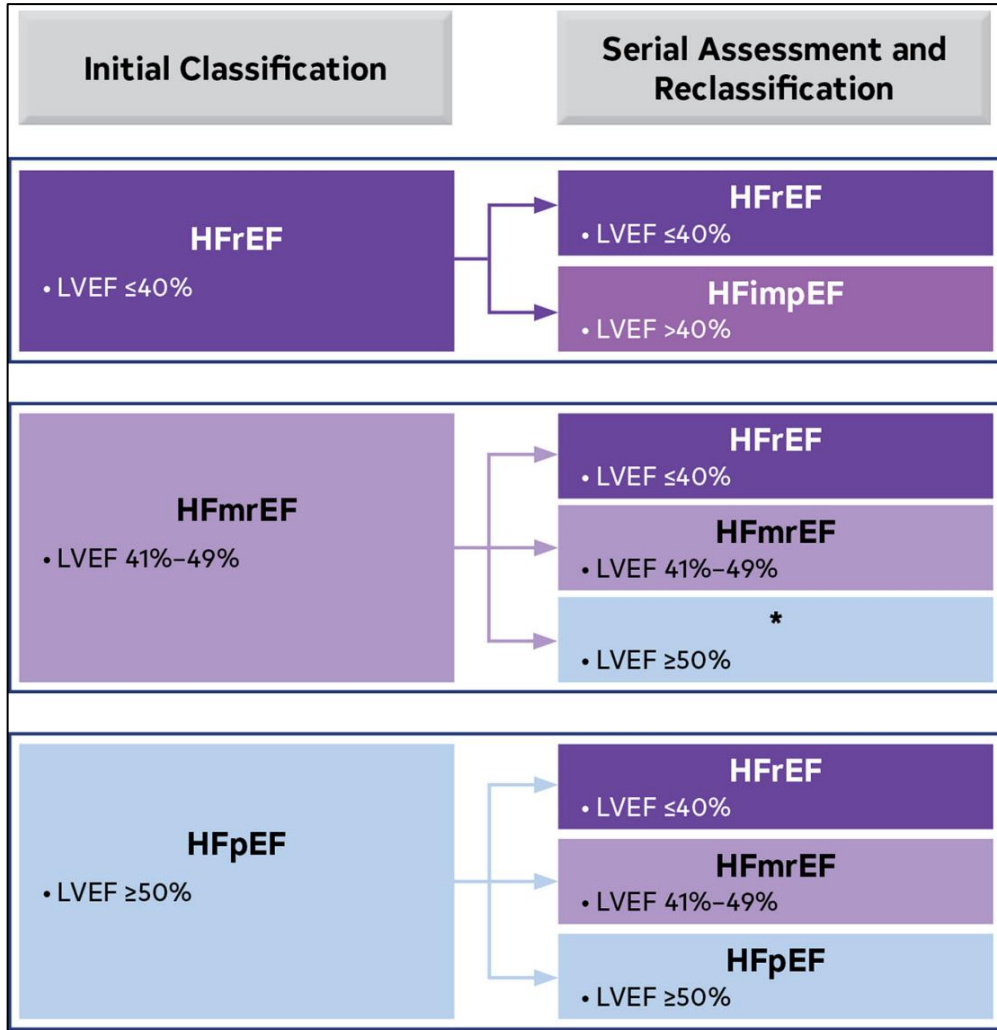
<p><u>Initial Approval Date and Reviews:</u> April 2021, April 23</p>	<p><u>Most Recent Revision and Approval Date:</u> April 2023 © Copyright MedStar Health, 2012</p>	<p><u>Next Scheduled Review Date:</u> April 2025</p>
--	--	---

Figure 3 below outlines the recommendations (Class 1 and 2a) for medication management for At-risk HF (stage A) and pre-HF (stage B). (2022)



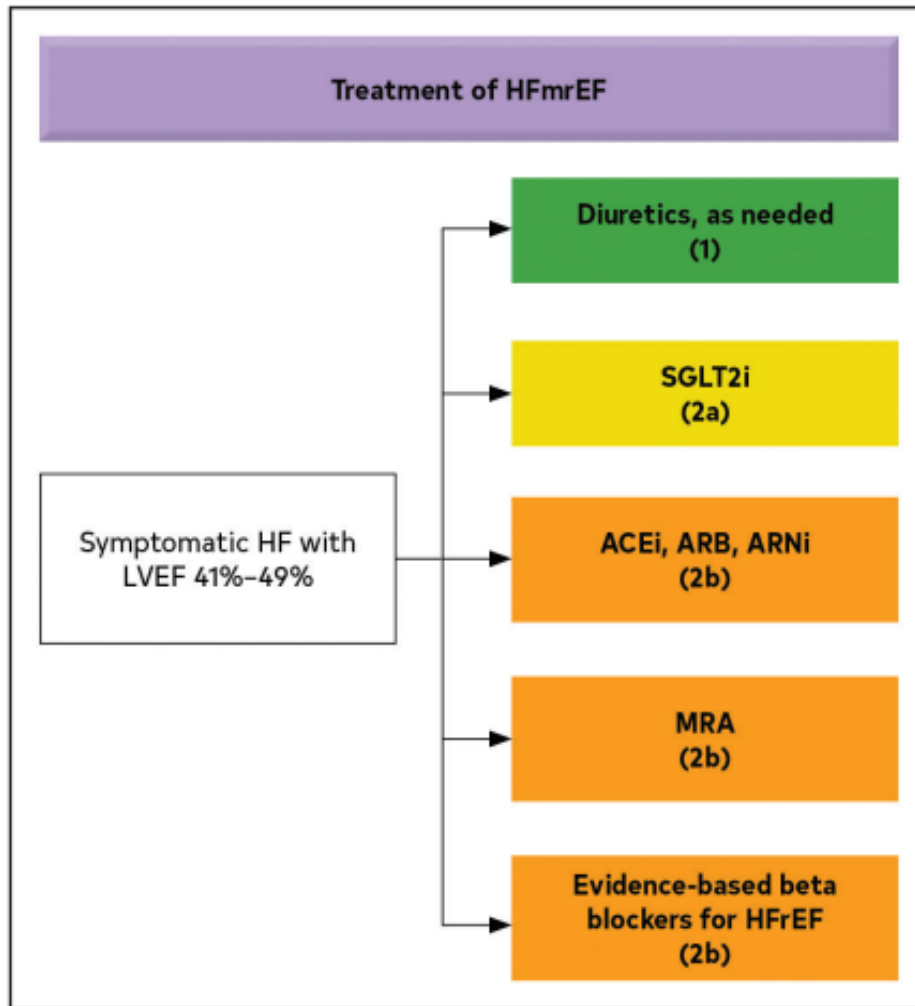
<u>Initial Approval Date and Reviews:</u> April 2021, April 23	<u>Most Recent Revision and Approval Date:</u> April 2023 © Copyright MedStar Health, 2012	<u>Next Scheduled Review Date:</u> April 2025
--	--	---

Figure 4: Classification and Trajectories of HF Based on LVEF. Patients with HFrEF who improve their LVEF to >40% are considered to have HFimpEF and should continue HFrEF treatment



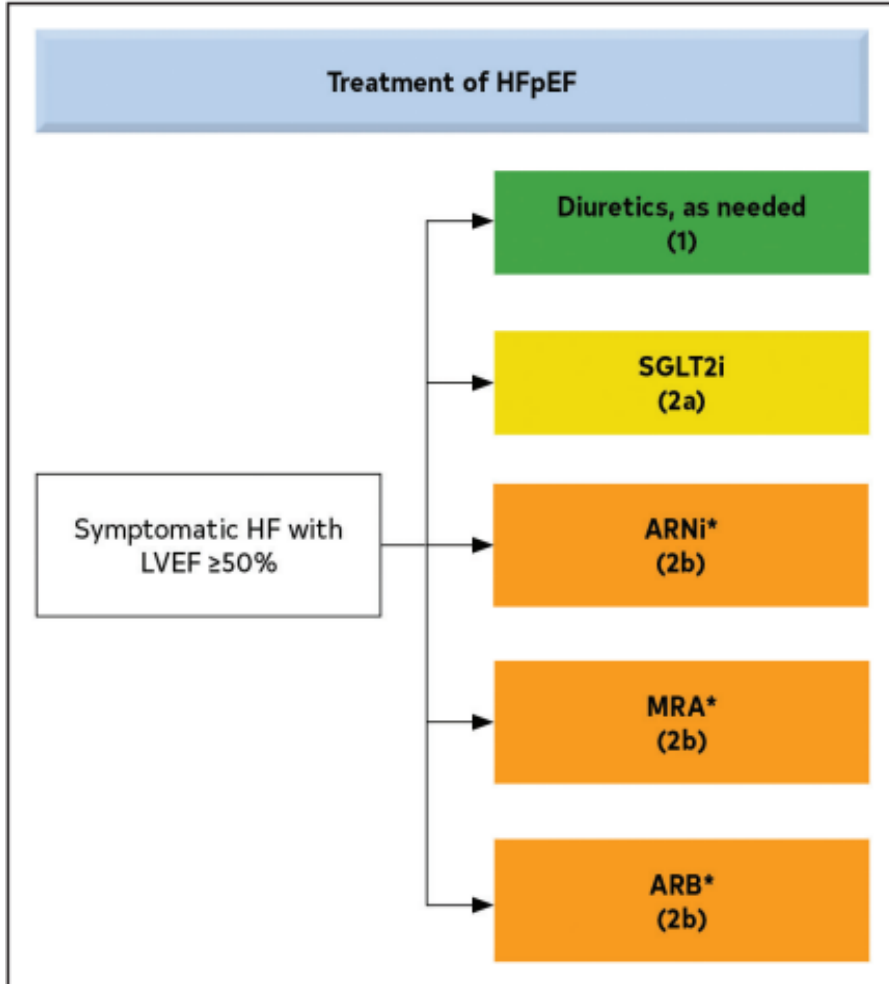
<p><u>Initial Approval Date and Reviews:</u> April 2021, April 23</p>	<p><u>Most Recent Revision and Approval Date:</u> April 2023 © Copyright MedStar Health, 2012</p>	<p><u>Next Scheduled Review Date:</u> April 2025</p>
--	--	---

Figure 6: Offers guidance on treatment strategies for patient with Heart Failure with Mildly Reduced EF (41-49%) (2022).



<p><u>Initial Approval Date and Reviews:</u> April 2021, April 23</p>	<p><u>Most Recent Revision and Approval Date: April 2023</u> © Copyright MedStar Health, 2012</p>	<p><u>Next Scheduled Review Date:</u> April 2025</p>
--	--	---

Figure 7: Offers guidance on treatment strategies for HFpEF, with the initiation of SGLT2i now being a class 2a recommendation (2022).



<p><u>Initial Approval Date and Reviews:</u> April 2021, April 23</p>	<p><u>Most Recent Revision and Approval Date: April 2023</u> © Copyright MedStar Health, 2012</p>	<p><u>Next Scheduled Review Date:</u> April 2025</p>
--	--	---

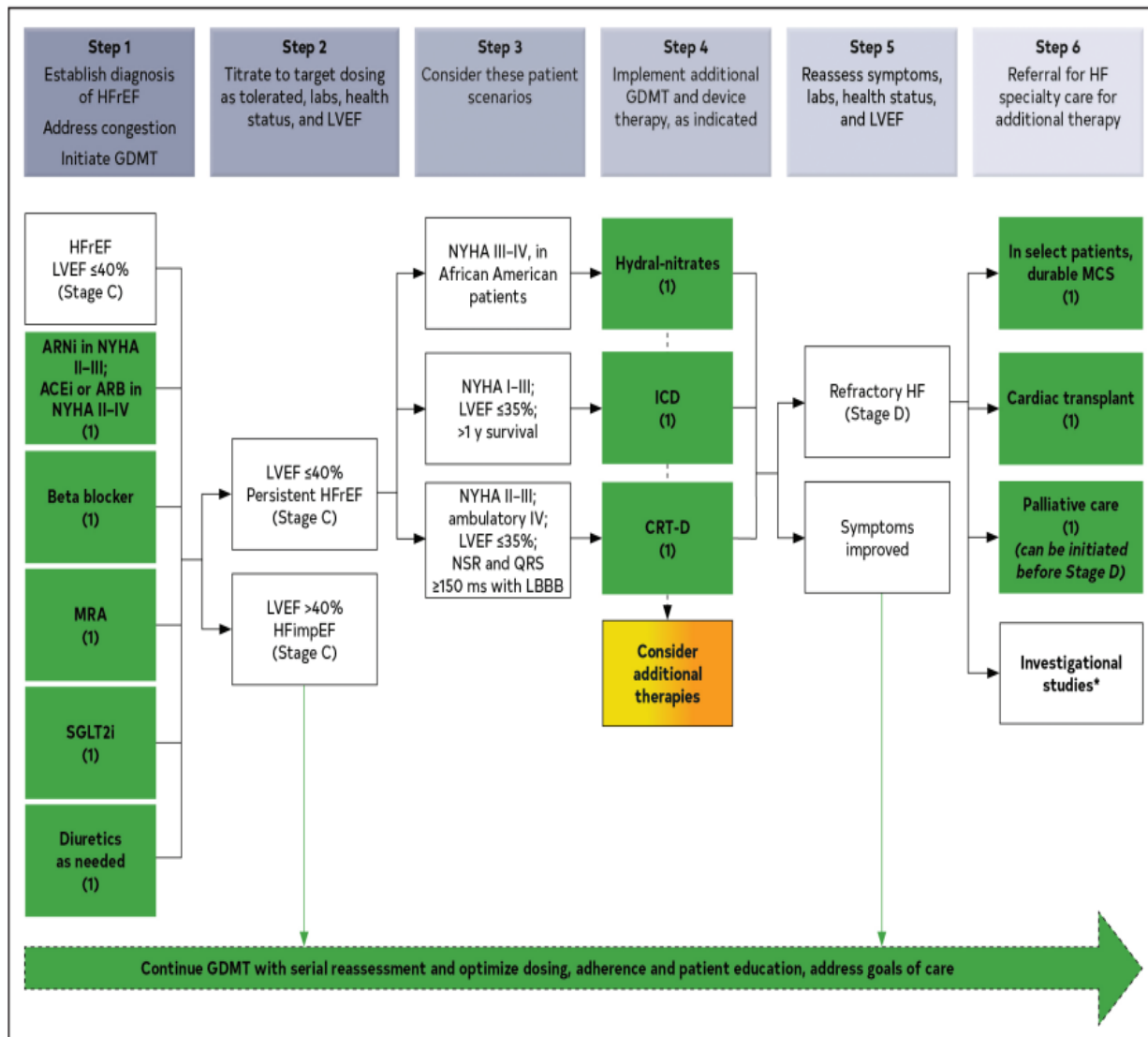


Figure 8: Treatment of HFREF Stages C and D. Step 1 medications may be started simultaneously at initial (low) doses recommended for HFREF. Alternatively, these medications may be started sequentially, with sequence guided by clinical or other factors, without need to achieve target dosing before initiating next medication. Medication doses should be increased to target as tolerated.

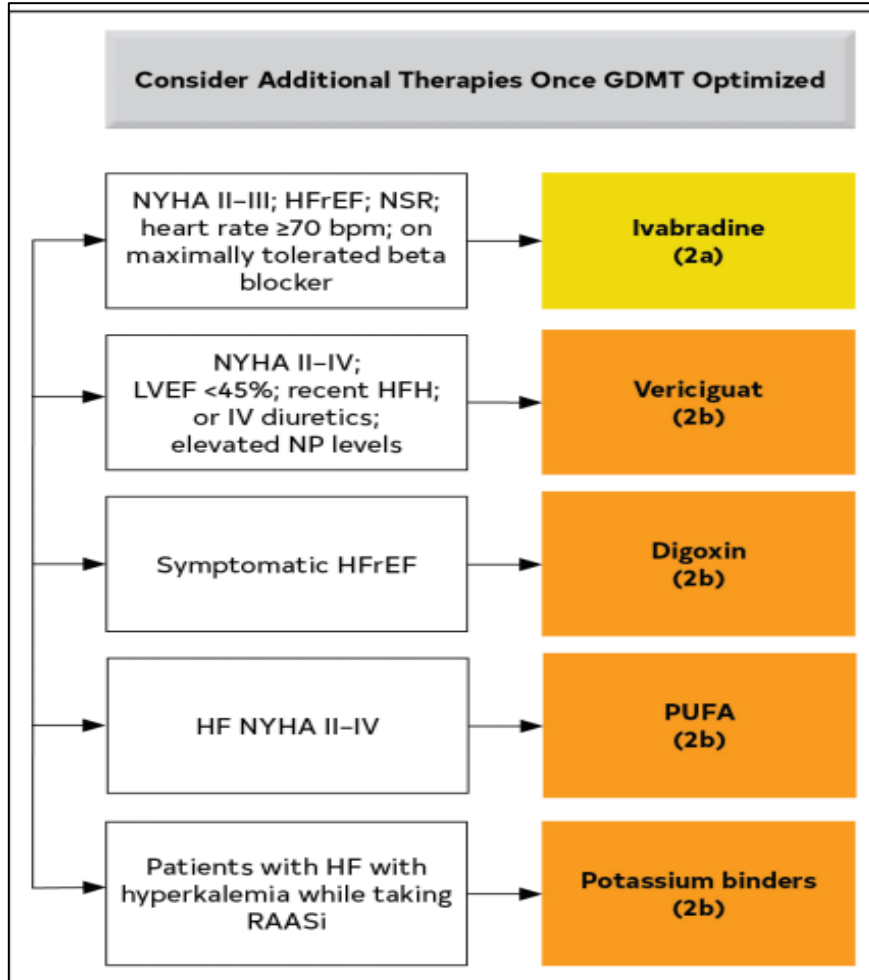
<p><u>Initial Approval Date and Reviews:</u> April 2021, April 23</p>	<p><u>Most Recent Revision and Approval Date:</u> April 2023 © Copyright MedStar Health, 2012</p>	<p><u>Next Scheduled Review Date:</u> April 2025</p>
--	--	---

High Value Statements for initiating GDMT in Stage C and D heart failure:

- ❖ In patient with previous or current symptoms of chronic HFrEF, treatment with an ARNi instead of ACEi provides high economic value. If ARNi is not feasible, treatment with an ACEi or ARB provides high economic value (COR 1)
- ❖ ARNi should NOT be administered concomitantly with ACEi or within 36 hours of the last dose of an ACEi. (COR3: HARM)
- ❖ In patient with HFrEF, use of 1 of the 3 beta blockers proven to reduce mortality (bisoprolol, carvedilol, metoprolol succinate) is recommended to reduce mortality and hospitalizations (COR 1)
- ❖ In patients with HFrEF and NYHA class II to IV symptoms, an MRA is recommended to reduce morbidity and mortality, if eGFR is >30 and serum potassium is <5.0. Careful monitoring of potassium, renal function and diuretic dosing should be performed at initiation and thereafter (COR 1)
- ❖ In patient with symptomatic chronic HFrEF, SGLT2 are recommended to reduce hospitalization for HF and cardiovascular mortality, irrespective of the presence of type 2 diabetes (COR 1)
- ❖ For patients self-identified as African American with NYHA class III-IV HFrEF who are receiving optimal medical therapy, the combination of hydralazine and isosorbide dinitrate is recommended to improve symptoms and reduce morbidity and mortality (COR 1).
- ❖ In patients with HFrEF, titration and optimization of GDMT as frequently as every 1 to 2 weeks depending on the patients’ symptoms, vital signs and laboratory findings can be useful to optimize management (COR 2a).
- ❖ For patients with symptomatic (NYHA class II to III) stable chronic HFrEF (LVEF < or equal to 35%) who are receiving GDMT, including a beta blocker at maximum tolerated dose, and who are in sinus rhythm with a hear rate of > or equal to 70 bpm at rest, ivabradine can be beneficial to reduce HF hospitalizations and cardiovascular death (COR 2a)

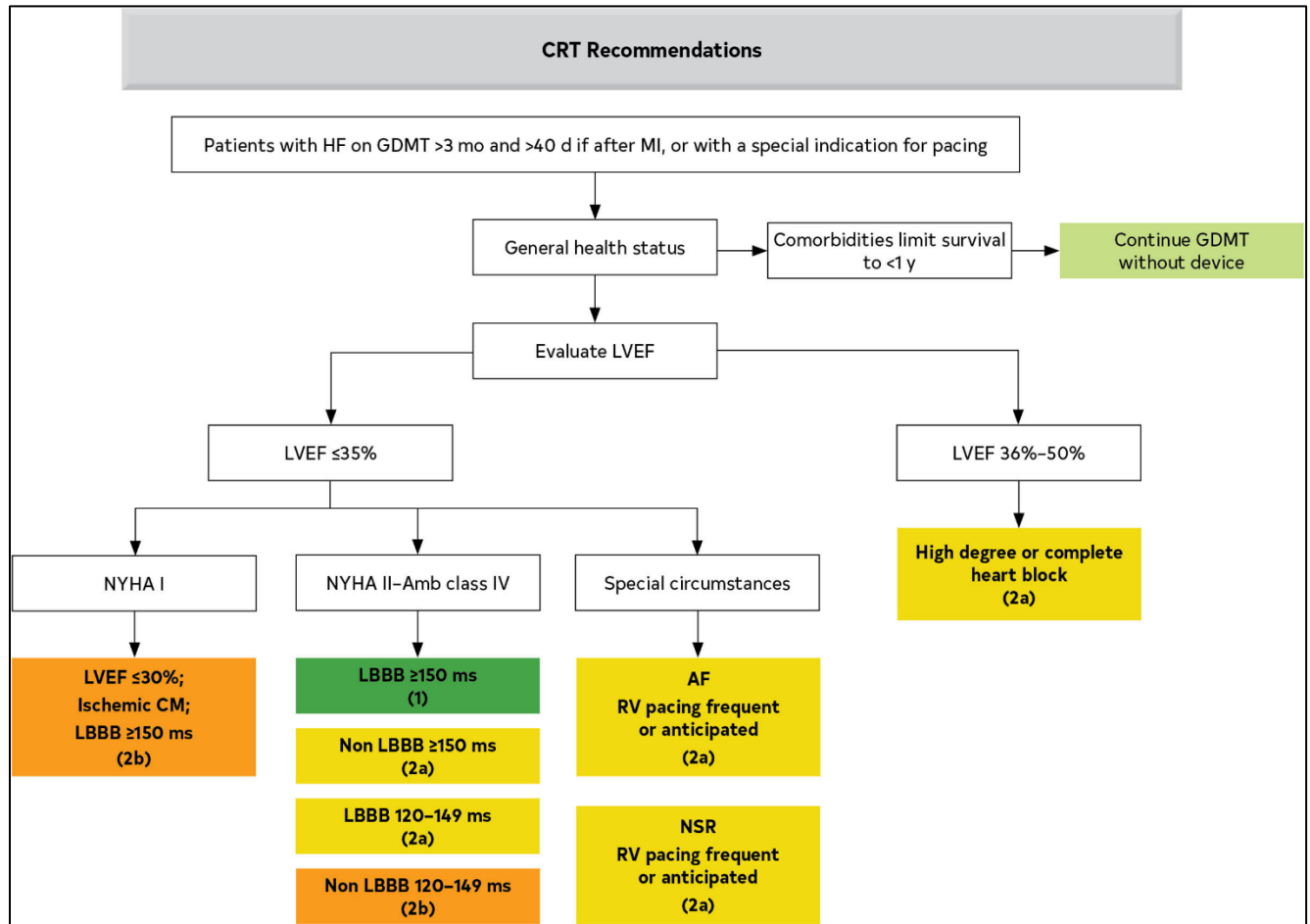
<u>Initial Approval Date and Reviews:</u> April 2021, April 23	<u>Most Recent Revision and Approval Date: April 2023</u> © Copyright MedStar Health, 2012	<u>Next Scheduled Review Date:</u> April 2025
--	--	---

Figure 9: Recommendations for additional therapies that may be considered for patients with HF already on optimal GDMT (2022)



<u>Initial Approval Date and Reviews:</u>	<u>Most Recent Revision and Approval Date: April 2023</u>	<u>Next Scheduled Review Date:</u>
April 2021, April 23	© Copyright MedStar Health, 2012	April 2025

Figure 10: Algorithm for CRT Indications in Patients with Cardiomyopathy or HFrEF



<p><u>Initial Approval Date and Reviews:</u> April 2021, April 23</p>	<p><u>Most Recent Revision and Approval Date:</u> April 2023 © Copyright MedStar Health, 2012</p>	<p><u>Next Scheduled Review Date:</u> April 2025</p>
--	--	---

Table 2: Offers guidance on optimal transitional care planning for patients with HF being discharged from the hospital (2022).

Table 25. Important Components of a Transitional Care Plan
A transitional care plan, communicated with the patient and their outpatient clinicians before hospital discharge, should clearly outline plans for:
Addressing any precipitating causes of worsening HF identified in the hospital;
Adjusting diuretics based on volume status (including weight) and electrolytes;
Coordination of safety laboratory checks (eg, electrolytes after initiation or intensification of GDMT);
Further changes to optimize GDMT, including: Plans for resuming medications held in the hospital; Plans for initiating new medications; Plans for titration of GDMT to goal doses as tolerated;
Reinforcing HF education and assessing compliance with medical therapy and lifestyle modifications, including dietary restrictions and physical activity;
Addressing high-risk characteristics that may be associated with poor post-discharge clinical outcomes, such as: Comorbid conditions (eg, renal dysfunction, pulmonary disease, diabetes, mental health, and substance use disorders); Limitations in psychosocial support; Impaired health literacy, cognitive impairment;
Additional surgical or device therapy, referral to cardiac rehabilitation in the future, where appropriate;
Referral to palliative care specialists and/or enrollment in hospice in selected patients.

Further recommendations for transition of care suggested include:

- ❖ early follow-up within 7 days of hospital discharge is reasonable to optimize care and reduce re-hospitalization (COR 2a), and
- ❖ in patients with high-risk HF, referral to a multidisciplinary HF disease management program to reduce risk of hospitalization (COR1)

Early outpatient follow-up, a central element of transitional care, varies significantly across US hospitals.¹¹ Early post-discharge follow-up may help minimize gaps in understanding of changes to the care plan or knowledge of test results and has been associated with a lower risk of subsequent rehospitalization.

<u>Initial Approval Date and Reviews:</u> April 2021, April 23	<u>Most Recent Revision and Approval Date: April 2023</u> © Copyright MedStar Health, 2012	<u>Next Scheduled Review Date:</u> April 2025
--	--	---

Table 3: Discusses common barriers to self-care in patients with Heart Failure and offers possible interventions (2022)

Table 11. Potential Barriers to Effective HF Self-Care and Example Interventions

Potential Barrier	Example Screening Tools	Example Interventions
Medical Barriers		
Cognitive impairment ⁴⁸⁻⁵⁰	Mini-Cog Mini-Mental State Examination (MMSE) Montreal Cognitive Assessment (MoCA)	Home health aide Home meal deliveries Adult day care Geriatric psychiatry referral Memory care support groups
Depression ^{51,52}	Hamilton Depression Rating Scale (HAM-D) Beck Depression Inventory-II (BDI-II) Patient Health Questionnaire-9 (PHQ-9)	Psychotherapy Selective serotonin reuptake inhibitors Nurse-led support
Substance use disorders ⁵³	Tobacco, Alcohol, Prescription medication, and other Substance use (TAPS)	Referral to social work services and community support partners Referral for addiction psychiatry consultation
Frailty ⁵⁴	Fried frailty phenotype	Cardiac rehabilitation Registered dietitian nutritionist evaluation for malnutrition
Social Barriers		
Financial burden of HF treatments ⁵⁵	COmprehensive Score for financial Toxicity-Functional Assessment of Chronic Illness Therapy (COST-FACIT)	PharmD referral to review prescription assistance eligibilities
Food insecurity ^{56,57}	Hunger Vital Sign, 2 items US Household Food Security Survey Module, 6 items	Determine eligibility for the Supplemental Nutrition Assistance Program (SNAP) Connect patients with community partners such as food pantries/ food banks Home meal deliveries Registered dietitian nutritionist evaluation for potential malnutrition
Homelessness or housing insecurity ⁵⁸⁻⁶⁰	Homelessness Screening Clinical Reminder (HSCR)	Referral to local housing services Connect patients with community housing partners
Intimate partner violence or elder abuse ^{61,62}	Humiliation, Afraid, Rape, Kick (HARK) questionnaire Partner Violence Screen (PVS) Woman Abuse Screening Tool (WAST)	Referral to social work services and community support partners
Limited English proficiency or other language barriers ⁶³	Routinely inquire in which language the patient is most comfortable conversing	Access to interpreter services covering a wide range of languages, ideally in person or, alternatively, via video platform Printed educational materials in a range of appropriate languages
Low health literacy ⁶⁴	Short Assessment of Health Literacy (SAHL) Rapid Estimate of Adult Literacy in Medicine-Short Form (REALM-SF) Brief Health Literacy Screen (BHLS), 3 items	Agency for Healthcare Research and Quality (AHRQ) Health Literacy Universal Precautions Toolkit Written education tools provided at sixth grade reading level or below Graphic educational documents
Social isolation or low social support ⁶⁵	Patient-Reported Outcomes Measurement Information System (PROMIS) Social Isolation Short Form	Determine eligibility for home care services Support group referral
Transport limitations	No validated tools currently available.	Referral to social work services Determine eligibility for insurance or state-based transportation, or reduced-cost public transportation Maximize opportunities for telehealth visits and remote monitoring

<u>Initial Approval Date and Reviews:</u> April 2021, April 23	<u>Most Recent Revision and Approval Date:</u> April 2023 © Copyright MedStar Health, 2012	<u>Next Scheduled Review Date:</u> April 2025
--	--	---

Table 4: Triggers for HF Patient Referral to a Specialist/Program (2021)

TABLE 6 Triggers for HF Patient Referral to a Specialist/Program	
Clinical Scenario	<p>1. New-onset HF (regardless of EF): Refer for evaluation of etiology, guideline-directed evaluation and management of recommended therapies, and assistance in disease management, including consideration of advanced imaging, endomyocardial biopsy, or genetic testing for primary evaluation of new-onset HF</p> <p>2. Chronic HF with high-risk features, such as development or persistence of one or more of the following risk factors:</p> <ul style="list-style-type: none"> ■ Need for chronic intravenous inotropes ■ Persistent NYHA functional class III-IV symptoms of congestion or profound fatigue ■ Systolic blood pressure \leq90 mm Hg or symptomatic hypotension ■ Creatinine \geq1.8 mg/dL or BUN \geq43 mg/dL ■ Onset of atrial fibrillation, ventricular arrhythmias, or repetitive ICD shocks ■ Two or more emergency department visits or hospitalizations for worsening HF in the prior 12 months ■ Inability to tolerate optimally dosed beta-blockers and/or ACEI/ARB/ARNI and/or aldosterone antagonists ■ Clinical deterioration, as indicated by worsening edema, rising biomarkers (BNP, NT-proBNP, others), worsened exercise testing, decompensated hemodynamics, or evidence of progressive remodeling on imaging ■ High mortality risk using a validated risk model for further assessment and consideration of advanced therapies, such as the Seattle Heart Failure Model <hr/> <p>3. Persistently reduced LVEF \leq35% despite GDMT for \geq3 months: refer for consideration of device therapy in those patients without prior placement of ICD or CRT, unless device therapy is contraindicated or inconsistent with overall goals of care</p> <hr/> <p>4. Second opinion needed regarding etiology of HF; for example:</p> <ul style="list-style-type: none"> ■ Coronary ischemia and the possible value of revascularization ■ Valvular heart disease and the possible value of valve repair ■ Suspected myocarditis ■ Established or suspected specific cardiomyopathies (e.g., hypertrophic cardiomyopathy, arrhythmogenic right ventricular dysplasia, Chagas disease, restrictive cardiomyopathy, cardiac sarcoidosis, amyloid, aortic stenosis) <hr/> <p>5. Annual review needed for patients with established advanced HF in which patients/caregivers and clinicians discuss current and potential therapies for both anticipated and unanticipated events, possible HF disease trajectory and prognosis, patient preferences, and advanced care planning</p> <hr/> <p>6. Assessment of patient for possible participation in a clinical trial</p>
<p>ACE = angiotensin converting enzyme inhibitors; ARB = angiotensin receptor blockers; ARNI = angiotensin receptor-neprilysin inhibitor; BNP = B-type natriuretic peptide; BUN = blood urea nitrogen; CRT = cardiac resynchronization therapy; EF = ejection fraction; GDMT = guideline-directed medical therapy; HF = heart failure; ICD = implantable cardioverter-defibrillator; LVEF = left ventricular ejection fraction; NT-proBNP = N-terminal pro-B-type natriuretic peptide; NYHA = New York Heart Association; SGLT2 = sodium-glucose cotransporter-2.</p>	

The MedStar Health Cardiology Clinical Practice Council recommends that all individuals with new onset HF rEF be referred for a Cardiology Consult. The decision to refer an individual to a heart failure specialist when the clinical scenario outlined above should be a joint decision between the PCP and the cardiologist.

<u>Initial Approval Date and Reviews:</u> April 2021, April 23	<u>Most Recent Revision and Approval Date:</u> April 2023 © Copyright MedStar Health, 2012	<u>Next Scheduled Review Date:</u> April 2025
--	--	---

TABLE 5: Reviews the common comorbidities and potential actions (2021)

Comorbidity	Association With Heart Failure Outcomes	Clinical Trial Evidence for Modulating Comorbidity	Suggested Action
Cardiovascular			
Coronary artery disease	Strong	Strong	<ul style="list-style-type: none"> Evaluate and revascularize in appropriate patients
Atrial fibrillation/flutter	Strong	Intermediate	<ul style="list-style-type: none"> Treat according to the current AHA/ACC/HRS Guideline for the Management of Patients with Atrial Fibrillation (158,159)
Mitral regurgitation	Strong	Intermediate	<ul style="list-style-type: none"> Refer to a structural heart disease expert Treat according to the current AHA/ACC Guideline for the Management of Patients with Valvular Heart Disease (160,161) and ACC ECDP on the Management of MR (162) Consider transcatheter intervention in carefully selected patients with symptomatic HF and secondary MR (163)
Aortic stenosis	Strong	Strong	<ul style="list-style-type: none"> Refer to a structural heart disease expert Treat according to current AHA/ACC Guidelines for the Management of Patients with Valvular Heart Disease (160,161)
Hypertension	Uncertain	Strong for prevention	<ul style="list-style-type: none"> Treat according to current ACC/AHA Guidelines for the Prevention, Detection, Evaluation, and Management of High Blood Pressure in Adults (164)
Dyslipidemia	Uncertain	Strong for prevention	<ul style="list-style-type: none"> Treat according to current AHA/ACC Guidelines on the Management of Blood Cholesterol (165) and the ACC ECDP on the Role of Non-Statins Therapies for LDL-Cholesterol Lowering in the Management of ASCVD Risk (166)
Peripheral vascular disease	Moderate	None	<ul style="list-style-type: none"> Treat according to current AHA/ACC Guidelines on the Management of Patients With Lower Extremity Peripheral Artery Disease (167)
Cerebrovascular disease	Moderate	Weak	<ul style="list-style-type: none"> Treat according to current ASA/AHA Guidelines for the Early Management of Patients with Acute Ischemic Stroke (168)
Noncardiovascular			
Obesity	Moderate (inverse association)	Weak	<ul style="list-style-type: none"> Further data needed
Chronic lung disease	Strong	Weak	<ul style="list-style-type: none"> Smoking cessation Optimize therapy Consider pulmonary consultation
Diabetes	Strong	Strong	<ul style="list-style-type: none"> Optimize therapy Administer SGLT2 inhibitor Consider consult with endocrinologist Treat according to the ACC ECDP on Novel Therapies for CV Risk Reduction in Patients with T2D (31) and ADA Standards of Medical Care in Diabetes (169)
Chronic kidney disease	Strong	Strong	<ul style="list-style-type: none"> Optimize RAAS inhibitor therapy Use hydralazine/ISDN if an ARNI/ACEI/ARB cannot be used Administer SGLT2 inhibitor Consider nephrology consult
Anemia	Moderate	Weak	<ul style="list-style-type: none"> Evaluate secondary causes Consider transfusion in severe cases
Iron deficiency	Strong	Intermediate	<ul style="list-style-type: none"> Consider intravenous iron replacement for symptom improvement
Thyroid disorder (hypo or hyper)	Strong	Weak	<ul style="list-style-type: none"> Evaluate and initiate treatment Consider referral to endocrinologist
Sleep disordered breathing	Strong	Intermediate; note that in patients with symptomatic HFrEF and central sleep apnea, adaptive servo-ventilation is harmful (170)	<ul style="list-style-type: none"> Refer for sleep study Treat severe obstructive sleep apnea Consider referral to sleep medicine specialist
Hyperkalemia	Uncertain; may limit initiation and titration of GDMT	Weak	<ul style="list-style-type: none"> Recommend dietary modifications Consider treating with patiromer (note: data regarding clinical outcomes are pending [NCT03888066]) or sodium zirconium cyclosilicate

<p><u>Initial Approval Date and Reviews:</u> April 2021, April 23</p>	<p><u>Most Recent Revision and Approval Date:</u> April 2023 © Copyright MedStar Health, 2012</p>	<p><u>Next Scheduled Review Date:</u> April 2025</p>
--	--	---

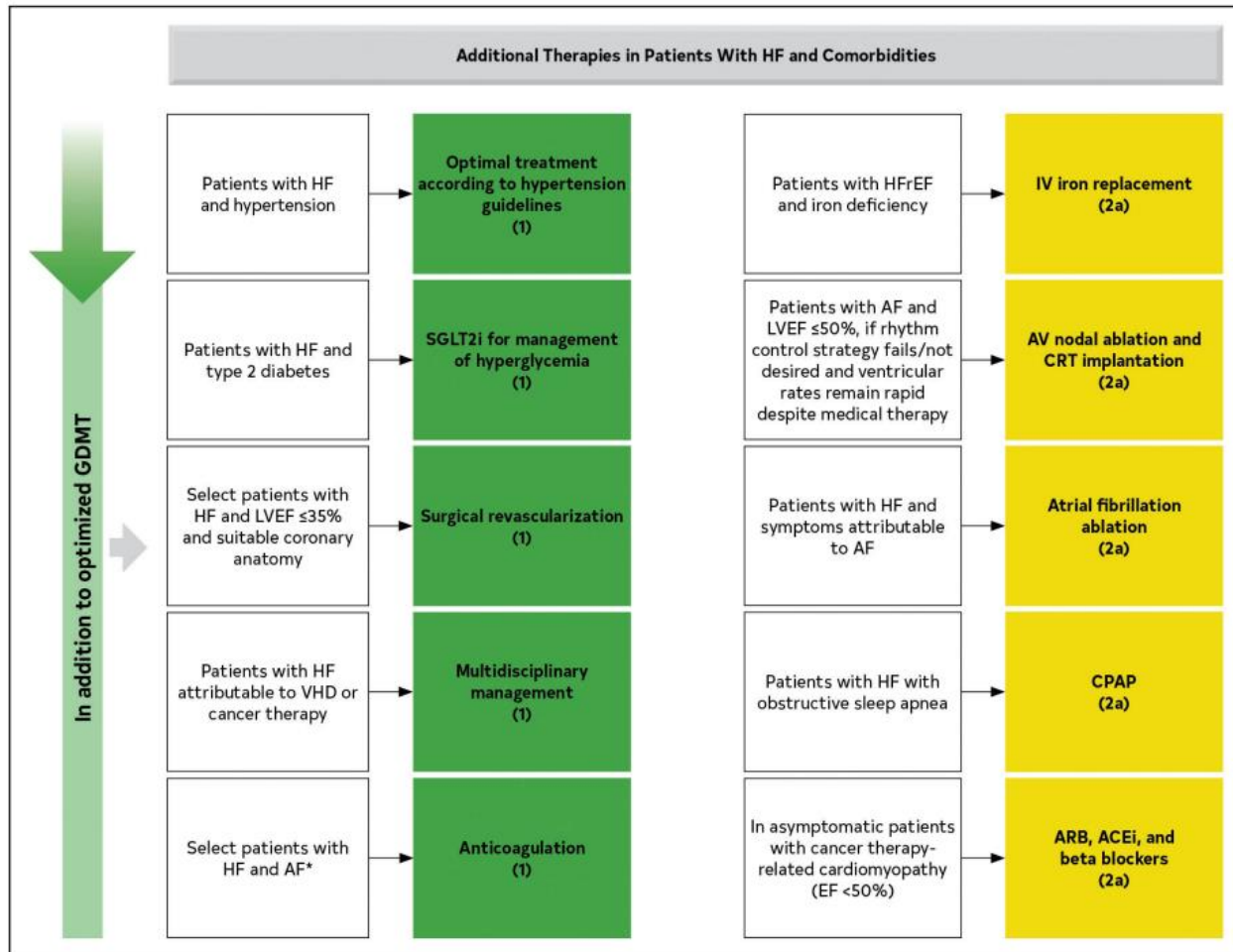


Figure 11: Offers further guidance on additional therapies for common comorbidities on HF patients from the 2022 ACA update.

<u>Initial Approval Date and Reviews:</u> April 2021, April 23	<u>Most Recent Revision and Approval Date:</u> April 2023 © Copyright MedStar Health, 2012	<u>Next Scheduled Review Date:</u> April 2025
---	---	--

Patient Education and Resources

Heart Failure Tools and Resources:

[Heart Failure Tools and Resources | American Heart Association](https://www.heart.org/health-topics/heart-failure)

<https://www.cardiosmart.org/topics/heart-failure>

<https://www.cardiosmart.org/>

Providing Self-Care Education

Patients at high risk for developing heart failure should be counseled to:

- ❖ **implement those behaviors that facilitate self-care, e.g.,**
 - monitor symptoms and weight fluctuations
 - take medications as prescribed
 - stay physically active
 - seek social support
 - change to a healthier lifestyle with an improved diet and exercise
- ❖ **avoid behaviors that may increase the risk of heart failure, e.g.,**
 - smoking
 - excessive alcohol consumption and illicit drug use
 - use of non-steroidal anti-inflammatory drugs
 - noncompliance with medical regimen
 - high salt and/or processed food binges

Sodium Restriction

Sodium restriction is a reasonable recommendation to improve symptoms in patients with symptomatic HF. Exact restriction levels are unclear, with recommendations differing across organizations. Overall, however, patients should be counseled to reduce sodium in their diets, especially from processed foods.

References:

<u>Initial Approval Date and Reviews:</u> April 2021, April 23	<u>Most Recent Revision and Approval Date: April 2023</u> © Copyright MedStar Health, 2012	<u>Next Scheduled Review Date:</u> April 2025
--	--	---

- 1) Heidenreich P, Bozkurt B, Aguilar D, et al. 2022 AHA/ACC/HFSA Guideline for the Management of Heart Failure. *J Am Coll Cardiol*. 2022 May, 79 (17) e263–e421. <https://doi.org/10.1016/j.jacc.2021.12.012>
- 2) Yancy CW, Jessup M, Bozkurt B, Butler J, Casey DE Jr, Drazner MH, Fonarow GC, Geraci SA, Horwich T, Jannuzzi JL, Johnson MR, Kasper EK, Levy WC, Masoudi FA, McBride PE, McMurray JJV, Mitchell JE, Peterson PN, Riegel B, Sam F, Stevenson LW, Tang WHW, Tsai EJ, Wilkoff BL. **2013 ACCF/AHA guideline for the management of heart failure: a report of the American College of Cardiology Foundation/American Heart Association Task Force on Practice Guidelines.** *J Am Coll Cardiol* 2013;62: e147–239.
- 3) Yancy CW, Jessup M, Bozkurt B, Butler J, Casey DE Jr, Colvin MM, Drazner MH, Filippatos GS, Fonarow GC, Givertz MM, Hollenberg SM, Lindenfeld J, Masoudi FA, McBride PE, Peterson PN, Stevenson LW, Westlake C. **2017 ACC/AHA/HFSA focused update of the 2013 ACCF/AHA guideline for the management of heart failure: a report of the American College of Cardiology/American Heart Association Task Force on Clinical Practice Guidelines and the Heart Failure Society of America.** *J Am Coll Cardiol*.2017;70:776–803.
- 4) Maddox TM, Januzzi JL Jr., Allen LA, Breathett K, Butler J, Davis LL, Fonarow GC, Ibrahim NE, Lindenfeld J, Masoudi FA, Motiwala SR, Oliveros E, Patterson JH, Walsh MN, Wasserman A, Yancy CW, Youmans QR. **2021 update to the 2017 ACC expert consensus decision pathway for optimization of heart failure treatment: answers to 10 pivotal issues about heart failure with reduced ejection fraction: a report of the American College of Cardiology Solution Set Oversight Committee.** *J Am Coll Cardiol* 2021; 77:772–810
- 5) Heidenreich PA, Bozkurt B, Aguilar D, et al. **2022 AHA/ACC/HFSA Heart Failure Guideline: Key Perspectives.** <https://www.acc.org/Latest-in-Cardiology/ten-points-to-remember/2022/03/29/19/53/2022-AHA-ACC-HFSA-Heart-Failure-Guideline-> (accessed 3/11/2023)

<p><u>Initial Approval Date and Reviews:</u> April 2021, April 23</p>	<p><u>Most Recent Revision and Approval Date:</u> April 2023 © Copyright MedStar Health, 2012</p>	<p><u>Next Scheduled Review Date:</u> April 2025</p>
--	--	---